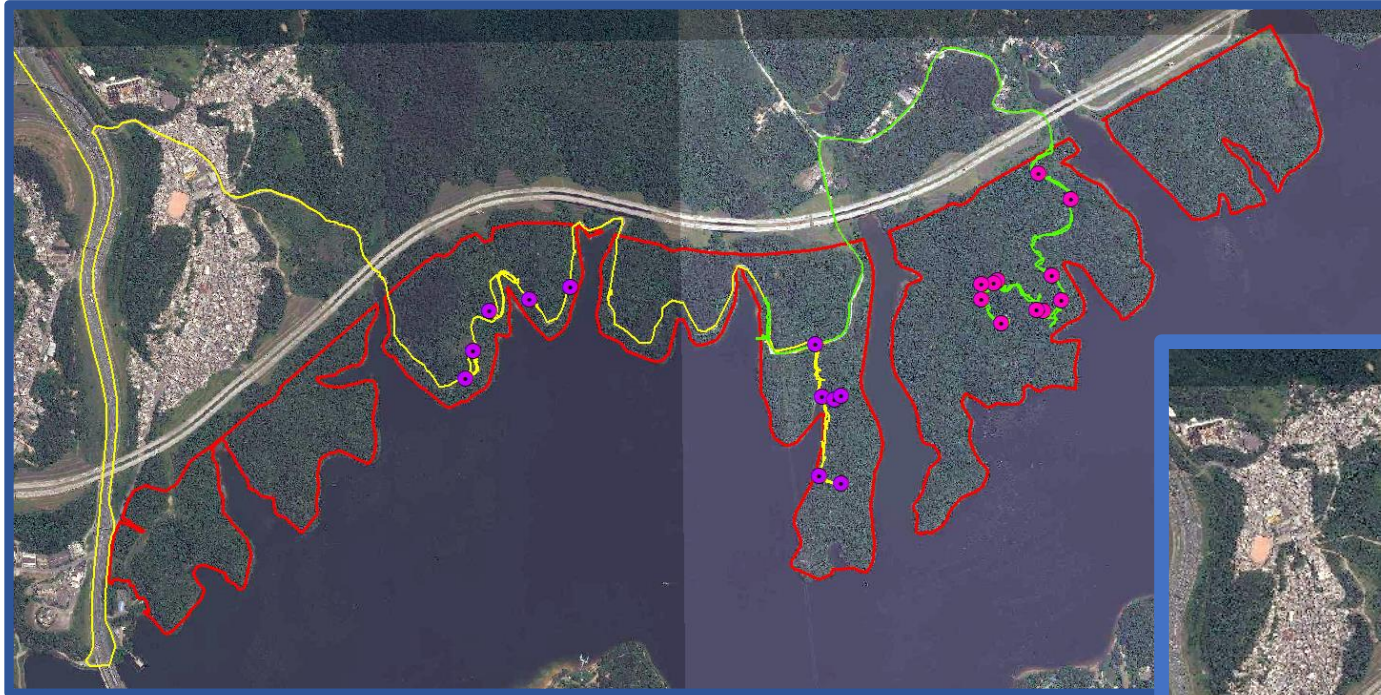


PLANO DE MANEJO PE ÁGUAS DA BILLINGS



CARACTERIZAÇÃO – VEGETAÇÃO E FLORA

Quatro dias de campo:

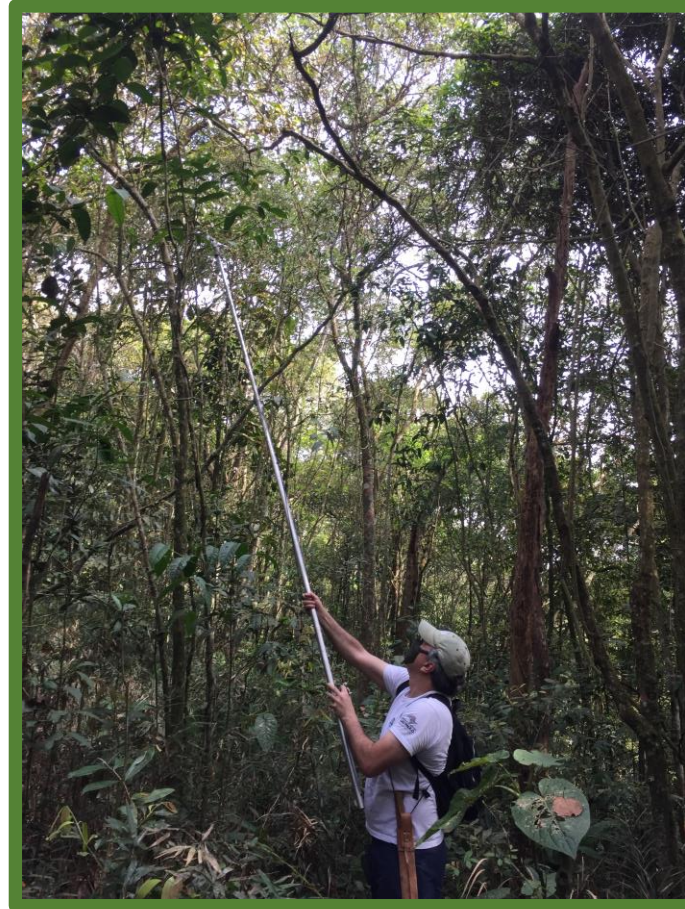


14/10/21 e 28/10/21 - ambiente terrestre

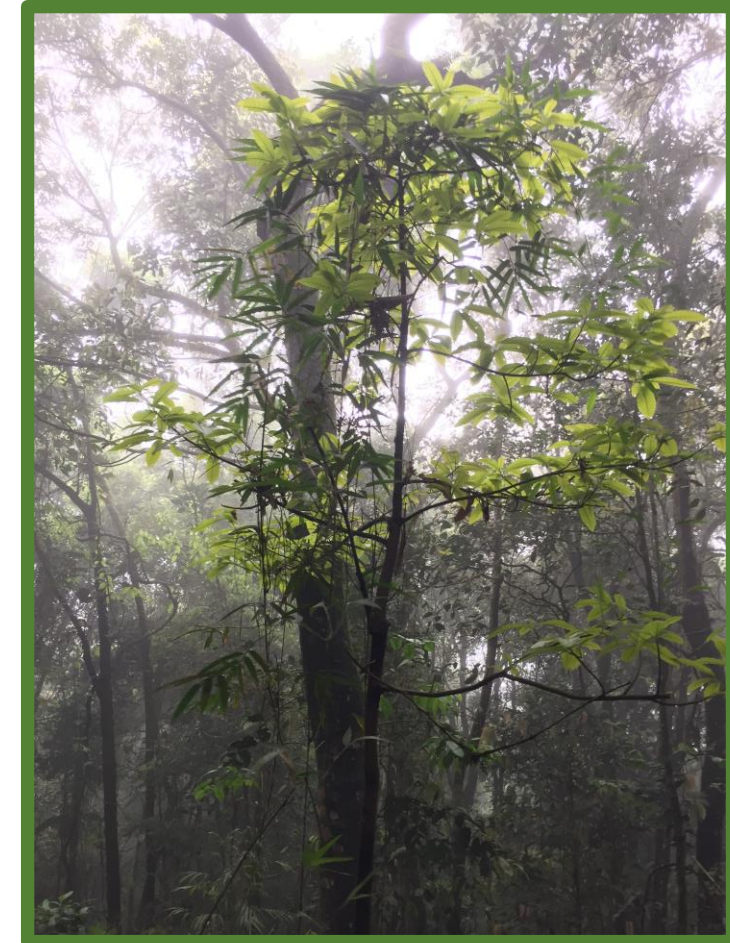
04/11/21 e 03/12/21 - ambiente aquático



CARACTERIZAÇÃO – VEGETAÇÃO E FLORA



CARACTERIZAÇÃO – VEGETAÇÃO E FLORA



Fruto – *Pouteria bullata* (guacá, guapeva)
Ameaçada de extinção – Em perigo

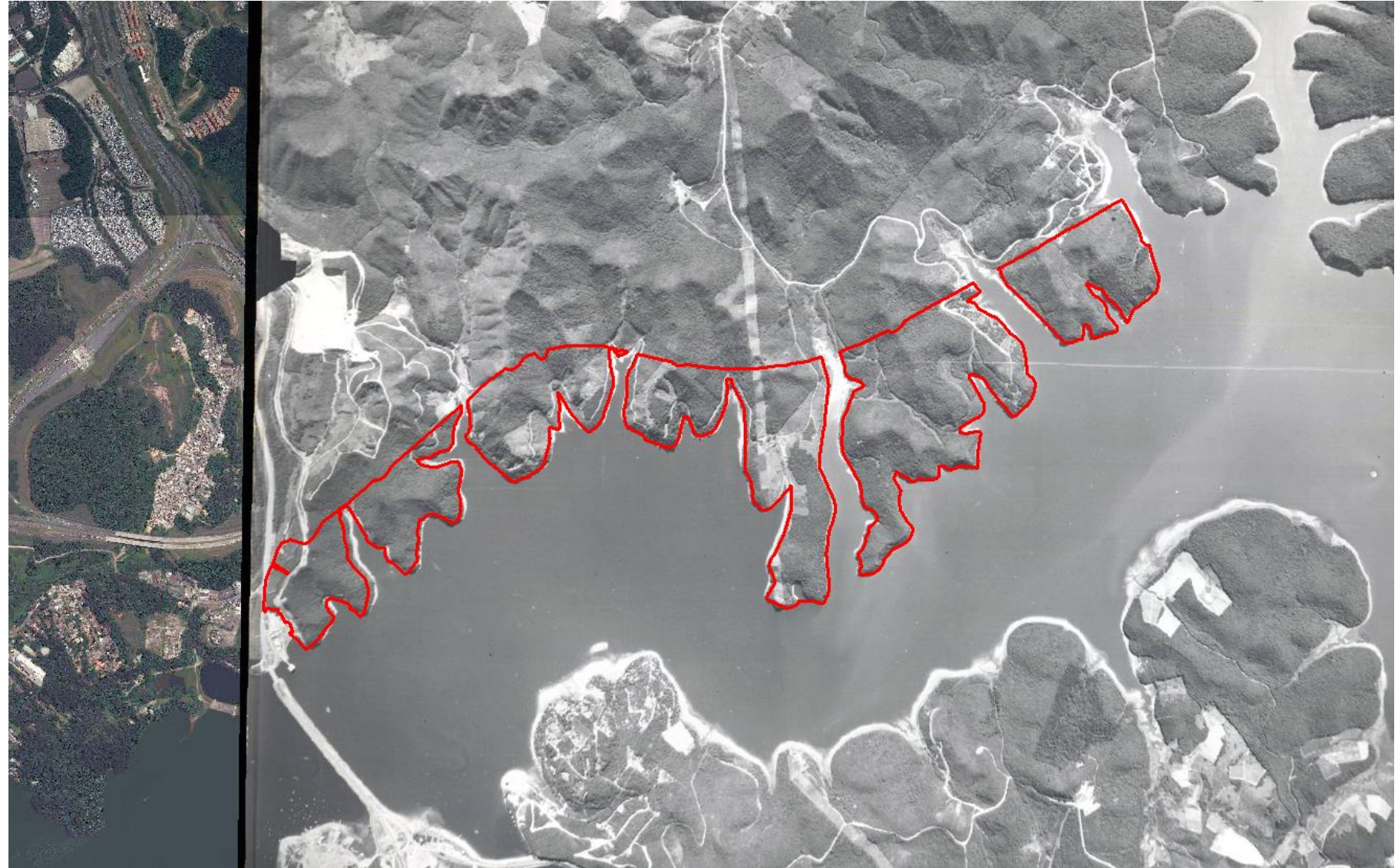
CARACTERIZAÇÃO – VEGETAÇÃO E FLORA



CARACTERIZAÇÃO – VEGETAÇÃO E FLORA





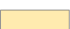
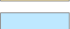




Mapeamento de vegetação secundária

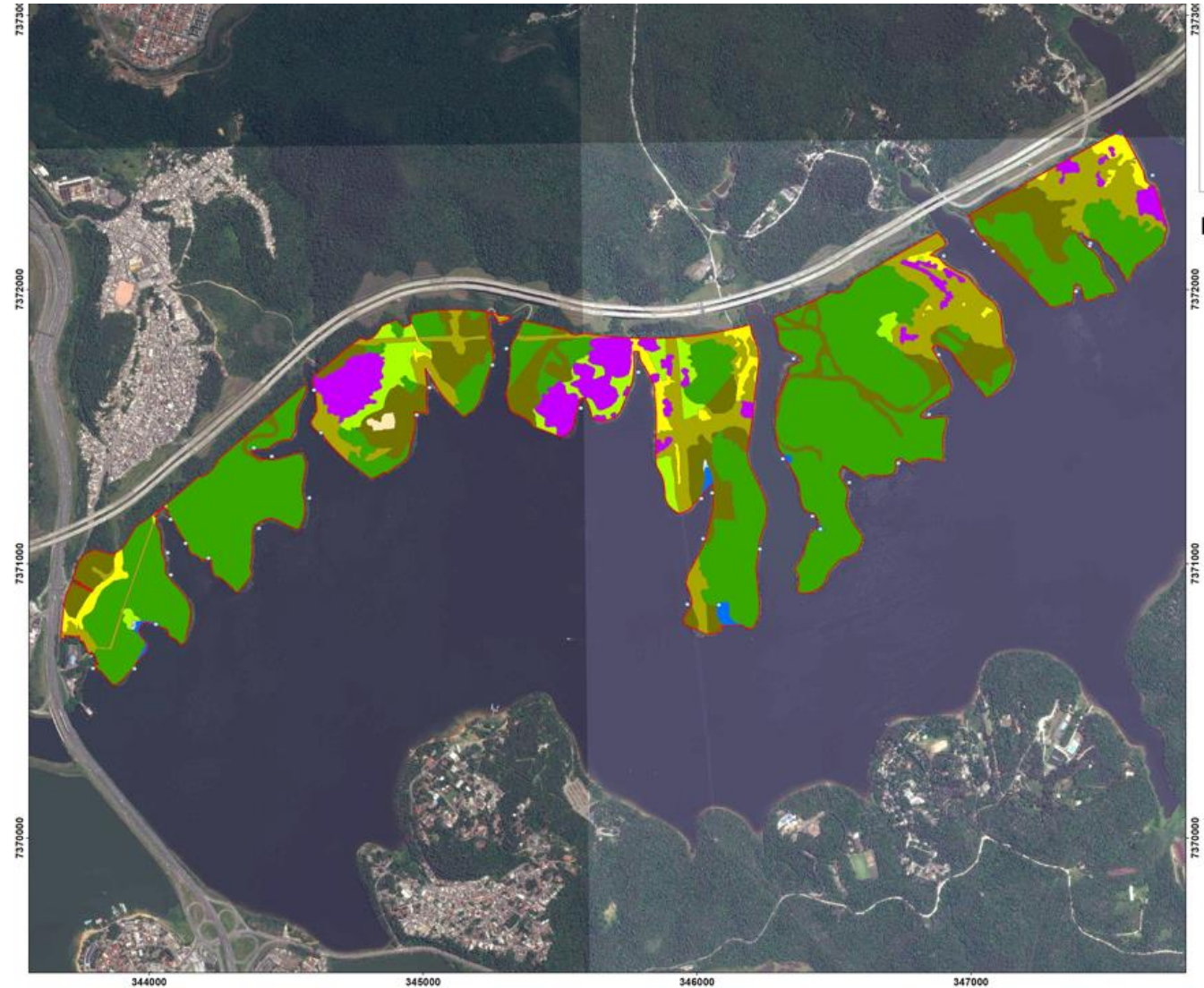
Fotografias aéreas 1962 (IGC)
Imagens de satélite 2002 (IKONOS)
Ortofotos 2006 (EMAE)



CARACTERIZAÇÃO – VEGETAÇÃO E FLORA

Legenda

-  Floresta Ombrófila Densa Montana Porte Médio
-  Floresta Ombrófila Densa Montana Porte Baixo
-  Vegetação Secundária Porte Médio
-  Vegetação Secundária Porte Baixo
-  Samambaia - Pteridium esculentum
-  Formação pioneira com influencia fluvial e/ou lacustre
-  Reflorestamento/Agrupamento arbóreo
-  Campo Antrópico
-  Represa
-  Formação pioneira com influencia fluvial e/ou lacustre



CRONOGRAMA PREVISTO – PLANO DE MANEJO

PE ÁGUAS DA BILLINGS

ETAPAS DE ELABORAÇÃO

